

# GALLERY

United Kingdom and Ireland

# 2022

Contact us to book



# VMZINC

# Introduction

**Company Profile** VMZINC® has been manufacturing a wide range of rolled zinc products used primarily for building envelopes since 1837. In addition to batten cap and standing seam roof systems, products include rainwater systems, a wide range of cladding systems, including a number of rainscreen facade products. Since its creation, the company has also produced decorative roofing products such as dormers, bull's eyes, weather vanes, finials and balustrades.



## Benefits of VMZINC

- Lightweight and durable
- Fully recyclable
- A service life of 100 years
- Virtually maintenance-free
- Can be installed on roof pitches as low as 3°
- Complex shapes can be clad using VMZINC
- All flashings and trim can be in the same material
- BRE EPD profile 15804
- BBA certified
- Conforms to EN 988
- Fire performance – No flame spread or penetration following Brooft4 testing. Fire classification according to EN 13501-1:2002 – A2-s1,d0
- Available in a choice of either natural finish or 10 pre-weathered finishes
- Cost effective
- Wide range of panel types



**VMZINC Finishes**



# Contents

## Public/Private Housing



**Dolphin Barn** – Public Housing



**Northbridge Phase 1** – Private & Public Housing



**Fair House** – Private House



**Driftwood** – Private House



**Lampwick Quay** – Private Housing



**Holly Lodge** – Private House



**Paradise Gardens** – Private Housing



**Fursham Down** – Private House

## Educational/Recreational



**Magdalene College Library**



**Dorothy Wadham** – Undergraduate Residence



**Stockport Grammar School**



**Filter House** – Student Accommodation



**Space Park** – Research Centre



**East Square Cinema**

## Commercial/Cultural/Social Healthcare



**Hanover Quay** – Offices



**Martello Park Café**



**Sky Pavilion** – Offices



**Ronald McDonald House** – Convalescent Home



**City Gates Church**



**Hale End Court** – Independent Living



# Public/Private Housing

## Public Housing

### Dolphin Barn Regeneration, Dublin

**Architect**  
Dublin City Council

**Contractor**  
KD Roofing

**Type of zinc**  
QUARTZ-ZINC

**System used**  
Interlocking and  
standing seam panels

**Surface area of zinc**  
1500m<sup>2</sup>

**Photo credit**  
Paul Kozlowski





# Public/Private Housing

## Private House

### Driftwood, Salcombe, Devon

#### Architect

Gillespie Yunnie  
Architects

#### Contractor

Architectural Metal  
Roofing

#### Type of zinc

QUARTZ-ZINC PLUS  
STRAT

#### System used

Standing seam roofing  
and cladding

Surface area of zinc  
450m<sup>2</sup>

Photo credit  
Paul Kozlowski





# Public/Private Housing

Private & Public Housing

## Northbridge Phase 1, Glasgow

**Architect**  
Keepmoat Homes  
with  
Collective  
Architecture

**Contractor**  
FD Roofing  
and Cladding

**Type of zinc**  
PIGMENTO Red PLUS

**System used**  
Standing seam roofing  
and cladding

**Surface area of zinc**  
4000m<sup>2</sup>





# Public/Private Housing

## Private House

### Fair House, Winchester

#### Architect

Anthony Munden  
Architect

#### Contractor

GSL Roofing

#### Type of zinc

ANTHRA-ZINC PLUS

#### System used

Standing seam roofing

#### Surface area of zinc

250m<sup>2</sup>

Photo credit  
Paul Kozlowski





# Public/Private Housing

## Private Housing

### Lampwick Quay, Manchester

#### Architect

Callison RTKL and  
JM Architects

#### Contractor

Longworth Building  
Services

#### Type of zinc

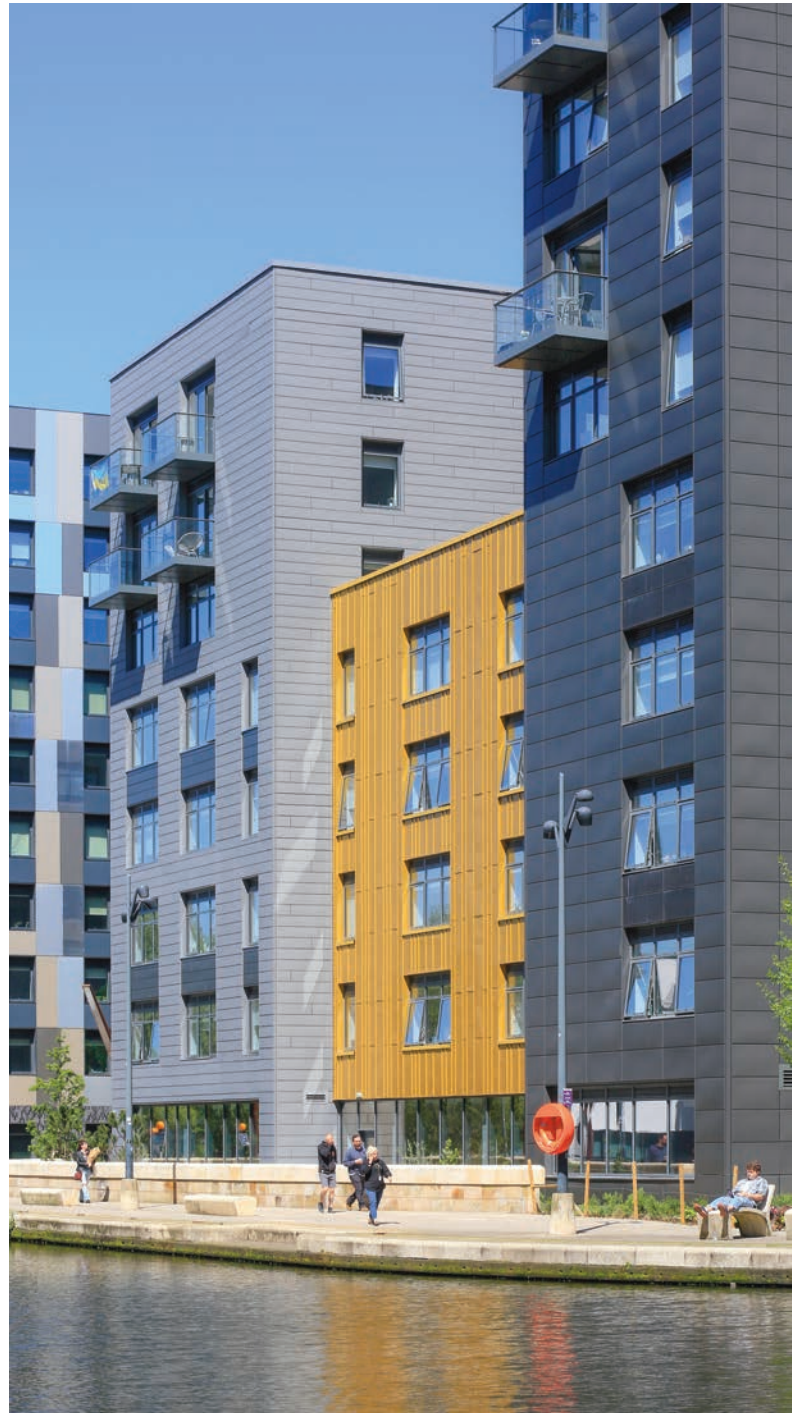
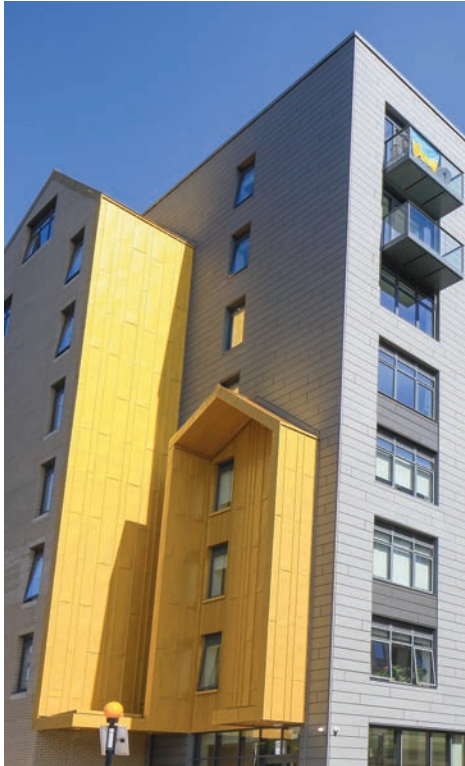
QUARTZ-ZINC,  
ANTHRA-ZINC,  
PIGMENTO Grey and  
bespoke Gold Zinc

#### System used

Standing seam roofing  
and cladding,  
Interlocking panels  
and Mozaik panels

Surface area of zinc  
9500m<sup>2</sup>

Photo credit  
Paul Kozlowski





# Public/Private Housing

## Private House

**Holly Lodge,  
Little Warley,  
Brentwood**

**Architect**  
Spatial Design  
Architects

**Contractor**  
Bridgehill Specialist  
Roofing

**Type of zinc**  
ANTHRA-ZINC PLUS

**System used**  
Standing seam roofing  
and cladding

**Surface area of zinc**  
270m<sup>2</sup>

**Photo credit**  
Paul Kozlowski





# Public/Private Housing

## Private Housing

### Paradise Gardens, London W6

#### Architect

Lifschutz Davidson  
Sandilands

#### Contractor

Richardson Roofing

#### Type of zinc

ANTHRA-ZINC PLUS

#### System used

Standing seam roofing  
and cladding

#### Surface area of zinc

1000m<sup>2</sup>

#### Photo credit

Paul Kozlowski





# Public/Private Housing

## Private House

**Fursham Down,  
Hittisleigh,  
Devon**

**Architect**  
Acorus Rural  
Property Services

**Contractor**  
Architectural Metal  
Roofing

**Type of zinc**  
ANTHRA-ZINC PLUS

**System used**  
Standing seam roofing  
and cladding

**Surface area of zinc**  
175m<sup>2</sup>

**Photo credit**  
Paul Kozlowski





# Educational/Recreational Library

## Magdalene College Library, Cambridge

Architect  
Niall McLaughlin  
Architects

Contractor  
All Metal Roofing

Type of zinc  
QUARTZ-ZINC PLUS

System used  
Standing seam roofing

Surface area of zinc  
1000m<sup>2</sup>

Photo credit  
Paul Kozlowski





# Educational/Recreational

## Undergraduate Residence

**Dorothy Wadham  
Undergraduate  
Residence,  
Wadham College,  
Oxford**

**Architect**  
Allies and Morrison

**Contractor**  
Richardson Roofing

**Type of zinc**  
QUARTZ-ZINC PLUS

**System used**  
Standing seam roofing  
and cladding

**Surface area of zinc**  
2700m<sup>2</sup>

**Photo credit**  
Paul Kozlowski





# Educational/Recreational

## Grammar School

### Stockport Grammar School, Stockport

Architect  
10 Architect

Contractor  
Northwest Lead

Type of zinc  
QUARTZ-ZINC PLUS

System used  
Standing seam roofing  
and cladding

Surface area of zinc  
339m<sup>2</sup>

Photo credit  
Paul Kozlowski





# Educational/Recreational

## Student Accommodation

### Filter House, Lancaster

#### Architect

Gino Lombardo  
Associates

#### Contractor

Longworth Building  
Services

#### Type of zinc

PIGMENTO Blue  
and Green

#### System used

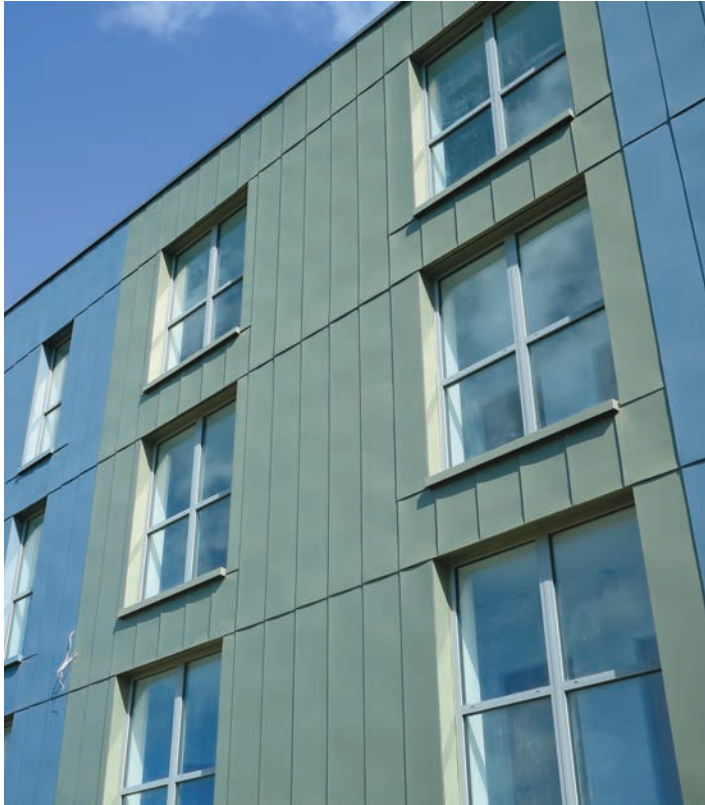
Flat lock panels

#### Surface area of zinc

3000m<sup>2</sup>

#### Photo credit

Paul Kozlowski





# Educational/Recreational Research Centre

## Space Park, Leicester

### Architect

Shepherd Epstein  
Hunter

### Contractor

Norman and  
Underwood

### Type of zinc

AZENGAR and  
ANTHRA-ZINC

### System used

Flat lock and standing  
seam panels

### Surface area of zinc

2100m<sup>2</sup>

Photo credit  
Paul Kozlowski





# Educational/Recreational Cinema

## East Square Cinema, Basildon

**Architect**  
Pollard Thomas  
Edwards

**Contractor**  
NA Curtain Walling

**Type of zinc**  
ANTHRA-ZINC,  
QUARTZ-ZINC,  
AZENGAR  
and  
bespoke Gold Zinc

**System used**  
Mozaik and bespoke  
shingles

**Surface area of zinc**  
3900m<sup>2</sup>

**Photo credit**  
Paul Kozlowski





# Commercial/cultural/social healthcare Offices

## Hanover Quay, Dublin

**Architect**  
O'Mahony Pike  
Architects

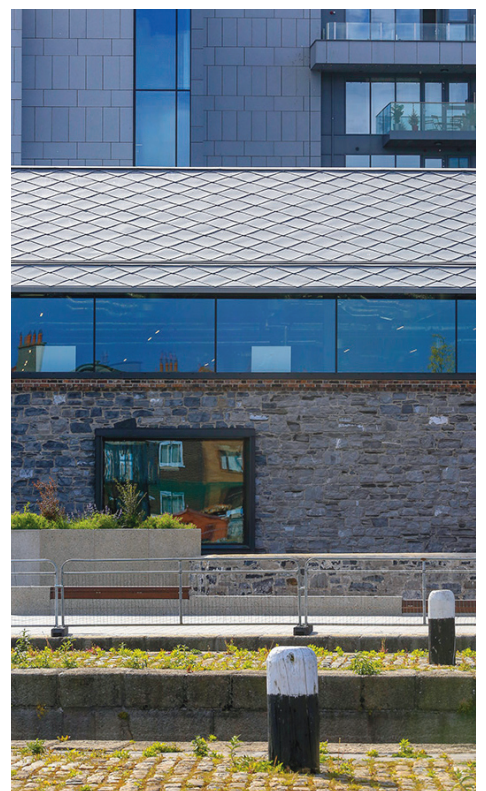
**Contractor**  
Crown Roofing

**Type of zinc**  
QUARTZ-ZINC

**System used**  
Diamond shingle  
roofing

**Surface area of zinc**  
2500m<sup>2</sup>

**Photo credit**  
Paul Kozlowski





# Commercial/cultural/social healthcare Café

## **Martello Park Café, Felixstowe, Suffolk**

**Architect**  
Plaice Design  
Company

**Contractor**  
RAC Roofing and  
Cladding

**Type of zinc**  
QUARTZ-ZINC PLUS  
and  
PIGMENTO Blue PLUS

**System used**  
Standing seam  
cladding and  
Adeka shingle roofing

**Surface area of zinc**  
940m<sup>2</sup>

**Photo credit**  
Paul Kozlowski





# Commercial/cultural/social healthcare Offices

## Sky Pavilion, Brentford, London

Architect  
Atkins Global

Contractor  
All Metal Roofing

Type of zinc  
PIGMENTO Red PLUS

System used  
Standing seam roofing

Surface area of zinc  
830m<sup>2</sup>

Photo credit  
Paul Kozlowski





# Commercial/cultural/social healthcare

## Convalescent Home

### Ronald McDonald House, Oxford

Architect  
AEW Architects

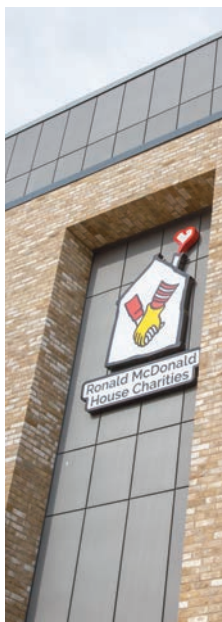
Contractor  
Sage Roofing

Type of zinc  
QUARTZ-ZINC

System used  
Mozaik

Surface area of zinc  
350m<sup>2</sup>

Photo credit  
Paul Kozlowski





# Commercial/cultural/social healthcare Church

## City Gates Church, Ilford

Architect  
Niche Architects

Contractor  
PMF Roofcraft Ltd

Type of zinc  
ANTHRA-ZINC

System used  
Standing seam  
cladding

Surface area of zinc  
500m<sup>2</sup>

Photo credit  
Paul Kozłowski





# Commercial/cultural/social healthcare

## Independent Living

### Hale End Court, Woking

**Architect**  
HNW Architects

**Contractor**  
Roles Broderick

**Type of zinc**  
AZENGAR

**System used**  
Flat lock shingles

**Surface area of zinc**  
500m<sup>2</sup>

**Photo credit**  
Paul Kozlowski





# Usage and contact information

## Use a Professional

As well as following design recommendations it is critical that VMZINC is installed in the correct manner and by trained professionals.

VMZINC provides training for installers with experience in metal roofing and cladding in partnership with the Lead Sheet Training Academy. This training is designed to supplement trained professionals with specific information concerning VMZINC.

## VMZINC at Work

We would also recommend that contractors be members of associations such as the Federation of Traditional Metal Roofing Contractors. Furthermore, VMZINC offers a list of recognised contractors that adhere to specific conditions concerning experience and training, namely VMZINC at WORK.

## RIBA Approved CPD Seminars

Please contact us to book a CPD seminar entitled 'Zinc as Building Envelope'. This seminar covers many subjects including aesthetics, applications, design requirements, installation methods as well as sustainability.

## CAD Details

A large library of CAD drawings in both .dwg and .pdf format is available. We also offer BIM objects.

## NBS Specifications

We offer specifications for all of our systems. These can be either downloaded or sent out from our office.

## Bespoke Roof and Wall Design

Panel layouts and project specific details can be created for projects when standard detailing may not quite be enough.

## Samples

Please contact us for material samples on all of our finishes. We can also send out larger samples for planning. All our literature is also available online and in paper format.

## VM Building Solutions UK Ltd

Collier House,  
Mead Lane,  
Hertford, Herts,  
SG13 7AX

**Web** [www.vmpzinc.co.uk](http://www.vmpzinc.co.uk)

**Tel** 0203 445 5640

**Email** [vmzinc.uk@vmbuildingsolutions.com](mailto:vmzinc.uk@vmbuildingsolutions.com)

